

Dear PlayZone Parent/Guardian:

***Please read carefully. This way you will know where to drop off & pick up your child on their first day and also how to find the weekly flyers that will contain pertinent information for each given week. A smooth and fun summer for your child starts with each camper coming properly prepared for each day's scheduled events.***

Summer is almost here and the first week (week 1) of our PlayZone Summer Day Camp **begins Monday, June 9<sup>th</sup>**. The counselors have been planning activities for each week of summer camp and will continue that process during training meetings this coming week. Whether your child is enrolled in Week 1 or won't be joining us until later this summer, it is important to read through the information below. Thanks for your cooperation!

PlayZone will be held at Highland Elementary (1325 Carlisle Rd). The PlayZone age groups will be together for the unstructured early mornings and late afternoons, mostly in the cafeteria. During structured time the age groups will use the café, gymnasium, outdoor playground areas & field space at HGES and some outdoor spaces next door at CCHS (i.e. single tennis courts and gaga pit).

#### Weekly Flyers:

- The Week 1 flyer is now available for your review and is included in this document.
- Since both PrimaryZone and SecondaryZone will be meeting in the same location, only one combined 2-sided flyer will be produced weekly.
- As with previous summers, each week's flyer will be available for you to download from our website by the preceding Thursday afternoon throughout the summer. Of course, hard copies of these flyers will also be available at your child's PlayZone site at that same time.
- Be sure you review the flyer each week before your child shows up on Monday, to make sure they are prepared.

#### Drop-Off and Pick-Up:

- All parents/guardians are required to sign their child *in* and *out* of camp daily. Please refer to the drop off/pick up map for assistance.
- As you enter the school grounds, parents/guardians will need to park in the front lot at HGES or along the right curb. Then you will walk your child over to the side-door on the right end of the building. See map included.
- The main HGES front entrance is NOT to be used for PlayZone purposes. Thank you for your cooperation!
- Once you get to the side door, there is a doorbell that you will need to ring. A PlayZone staff person will need to let you in.
- We will have a sign-in and sign-out area in the hallway near that side door. See map included at end of document.

**Drop-off...** May begin at 7:30 am. Parents and campers will not be permitted in the building until 7:30 am. The PlayZone Counselors have numerous facility opening procedures to execute each day, so for the early camper arrivals, the staff would appreciate not arriving until a little after 7:30 am when possible. Structured activities will typically begin approx 9:15 am, so it would be good if your camper arrives by that time. Again, pay attention to the Weekly Flyers in case an earlier arrival is necessary due to a field trip or special activity.

Pick-up...Remember the absolute latest time you may pick-up your child is 5:15 pm. Make sure you have a back-up plan in place for alternate people to pick-up your child in case you are held up at work or caught in traffic. These alternate individuals must be listed on your child's Consent Form.

**Text taken from the PlayZone FAQ document....** When is the latest time campers need to be picked-up by?

Children must be picked no later than **5:15 pm**. If children are not picked up by that time, a late fee of \$1 per minute will be charged for each child. Chronically late pick-ups may result in termination from the program at WSSD's discretion. Late fees must be paid no later than the next morning at drop off. Late fees are to be paid directly to the counselor. Since the counselor is the person inconvenienced by the late pick-up, the counselor keeps the late fee as compensation for their time and potential disruption of personal schedule. If the late fee is not paid as requested, the child will not be permitted to attend camp until the fee is settled.

### Clothes:

- Campers will receive their PlayZone t-shirt(s) on their first day at camp. These T-shirts are **required** to be worn on Trip Days.
- Otherwise, please send your child dressed appropriately to participate in daily activities. Sneakers are required to be worn for activities in the gymnasium (non-marking sole type). For safety reasons we also recommend they be worn for all active play activities at PlayZone. Flip flops and sandals are fine to wear going to or heading back from the pool.
- Pay attention to swimming days on the weekly flyers, so your child is able to take part in the swimming fun! **If they need goggles or a life vest/non-inflatable flotation device, be sure to send it along.** WSSD does not provide these items.
- Keep in mind that this is summer camp, so we will be outside much of the time.
- It is a good idea to send along any sunscreen and/or insect repellent that you would like your camper to use. Counselor cannot rub-in sunscreen or insect repellent for a camper. A hat may also be helpful. After all, it is the sunburn, mosquito, gnat and tick season.
- It is also a good idea to send a backpack or bag for your child daily to store items such as water bottle, sunscreen, insect repellent, swimming gear and other odds & ends.

### Lunch & Snack:

- Be sure your child brings their packed lunch daily! A small late afternoon snack should also be packed daily. Keep in mind refrigeration is not available, so use cooler bags if needed.
- **New lunch option this summer on most days.** The West Shore School District has extended an invitation to PlayZone parents this summer to take advantage of their FREE Summer Lunch Program. Please understand that West Shore Recreation is not in charge of or have any input into this FREE Summer Lunch and will not be able to answer any questions about it.  
Starting June 16<sup>th</sup>, the WSSD will be providing free lunches Monday thru Thursday to interested campers and other children from the community. The WSSD lunch program is not held on Fridays. PlayZone staff will be walking the entire group of campers over to Cedar Cliff HS cafeteria to eat lunch. All campers will be eating at CCHS whether the camper brought their own packed lunch or are getting lunch through the WSSD free lunch program. The WSSD currently has the menu for June available.  
Parents that choose to have their child participate in WSSD program are responsible to keep track of the PlayZone schedule. On Thursdays, when PlayZone is going on a field

trip, campers MUST bring a packed lunch since we will be off-site during the time when the WSSD lunch is served. Also, it is important to keep in mind that the WSSD free lunch is *never* available on a Friday.

Finally, in case any parents are interested, the WSSD also has FREE breakfast available from 8:15 am-9:00 am that you may take your child to prior to bringing them to PlayZone. Keep in mind the breakfast & lunch is only offered to the child and is not available for parents.

- **Campers must bring a reusable water bottle daily**, labeled with their name. A water bottle filler fountain is available inside HGES to refill water bottles. Hydration is important in the summer heat! Be sure to relay to your child to drink plenty of water.

### Site Rules:

- A copy of the general Site Rules for 2025 is available later in this document. Please review these with your child prior to their first day of camp.
- **Both you and your child must sign a copy of these Site Rules.** *You may either: print, sign and bring it with you to camp or you may sign a copy upon dropping off your child on their first day.*

### Text notifications thru “Remind”.

As mentioned in a previous e-mail sent to you back on May 13, WSRec will be using “Remind” to text important info to you this summer. The Remind invite was texted out to parents/guardians on May 14. *We are happy to report that almost all of our parents/guardians have responded “YES” to receiving the text messages, however there are still about 10 parents out there that have not accepted the REMIND invite. Are you one of those parents?* Do it today if you want to stay informed of PlayZone items this summer. We appreciate you taking this step to make sure you are up to date with PlayZone info. Thank you!

Another summer of fun is planned and the PlayZone staff is looking forward to getting started! Thank you for your cooperation!

West Shore Recreation Commission

## **PlayZone Site Rules 2025**

1. **Have fun and smile!!!**
2. Rules are at the discretion of the PlayZone staff.
3. Respect others and their property.
4. Wear shoes at all times. We highly recommend always wearing sneakers due to active play (sandals, flip flops & dress shoes are not safe footwear at camp and are not permitted in the gymnasium).
5. Campers must bring a refillable water bottle daily (put name on it). A bottle filler fountain is available for refills. It is important to stay hydrated to keep you feeling your best!
6. If you need a flotation device, goggles, mask or flippers, you must bring your own.
7. If using sunscreen, campers must be able to apply it themselves. Counselors cannot rub-in sunscreen for a camper. Swimshirts are HIGHLY recommended for outdoor swimming trips.
8. Chewing gum should be left at home.
9. Let's keep it clean, no foul/offensive language.
10. Let's keep camp fun for everyone; bullying (emotional or physical) is not acceptable.
11. Be kind to the ceiling, balls must be kept away from the ceiling in the gyms.
12. Hand held video games (i.e. PSP, Nintendo Switch/DS/WiiU), portable music players (i.e. I-Pod) are not permitted at Primary Zone and SecondaryZone. Cell/Smartphones/Smartwatches are not recommended as they will be required to be kept in your backpack at all times (out of sight). This includes at the swimming pool or on the buses as well. Summer camp is the time to "unplug".
13. Keep bathrooms neat. Paper towels are to be put in the wastebasket only. No bathroom stall locking (leaving stall locked and crawling out underneath). Flushing toilets after use is required.
14. Extra spending money for trips is optional and children will be required to hold onto their own money at all times and be personally accountable if they misplace or lose it. No lending/giving money to other campers. Counselors will not hold or lend money for campers.
15. Energy drinks (Red Bull, Monster, Rockstar, Five Hour Energy, Bang, Kickstarts, Prime, Celsius, etc) are not permitted.
16. Dangerous/illegal controlled substances/devices (including alcohol & traditional tobacco products and e-cigs, vapes or Jul) are banned from camp. Remember, we are on School District property.
17. What's your hurry? Please walk through the building.
18. Ask permission to enter storage room/bathrooms.
19. Clean up after yourself (bring all equipment back inside with you).
20. Eating permitted only at lunch and snack time.
21. Sports/trading/Pokemon cards (or other similar collector items) and fidget toys and slime are not permitted.
22. No selling items to others campers (store bought or homemade)
23. The World Series of Poker does not take place at camp (no poker/card/gambling games).
24. **West Shore Rec and camp staff are not responsible for personal property if lost, stolen or damaged.**
25. If you want to rollerblade or ride a scooter, you must wear a helmet. At PrimaryZone pads are also required to rollerblade and we highly recommend them SecondaryZone campers as well. No rollerblading inside and no sharing blades or scooters with other campers.
26. Children must participate in organized activities for designated amount of time.
27. Use 2 inch voices in buses.
28. Eating or drinking in the buses is not permitted.
29. Keep hands and feet to yourself.
30. Stay positive and eliminate the whining.
31. Follow directions the first time.
32. No weapons of any type permitted at camp. Possession of a weapon on school property is a criminal offense in the Commonwealth of Pennsylvania

These rules have been established to help make sure everyone has an enjoyable experience, so come to camp with a positive attitude and have fun! List is not all-inclusive, additional guidelines will be established at PlayZone. We want all campers to have a safe summer! My child and I have reviewed and understand the 2025 Site Rules as listed above.

Parent/Guardian Signature: \_\_\_\_\_ Date: \_\_\_\_\_

Camper's Signature: \_\_\_\_\_ Date: \_\_\_\_\_



**PlayZone**  
**2025**

**Highland ES**  
**Drop-off**  
**&**  
**Pick-up**  
**Map**

**Drop-off**  
**begins no**  
**earlier than**  
**7:30 am.**

**Campers**  
**must be**  
**picked-up no**  
**later than**  
**5:15 pm**



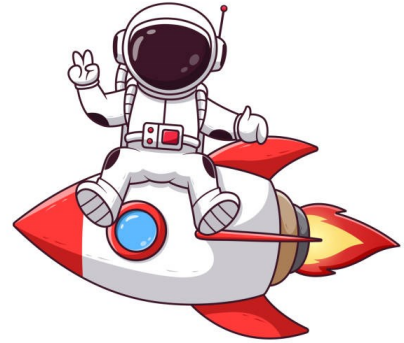
# PrimaryZone

June 9-13  
SUMMER DAY CAMP

Week 1 - Space Week

## Monday: Welcome to PlayZone

- ◆ Introductions, icebreaker games, rule review and camp info
- ◆ Outside Games: simon says, relays
- ◆ Red Light/Green Light, BINGO
- ◆ Playground Time



## Tuesday:

- ◆ Icebreakers: human knot, 4 corners
- ◆ Outside Games: capture the flag, sharks & minnows
- ◆ Games: steal the moon, among us, name game
- ◆ Read Aloud: "What If Everybody Did That?"

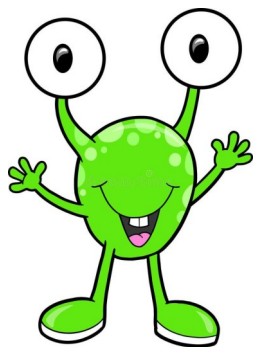


## Wednesday: swim day

- ◆ Inside Games: icebreakers, blob tag
- ◆ Summer Reading Program - Mrs. Young from the NC Public Library begins her weekly visits with us for a story/activity (10:00-10:30 am). Each week she will bring a tote of books for campers.

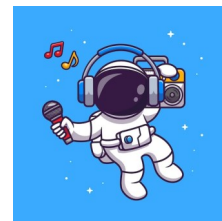
### ◆ Swimming @ West Shore Natatorium (RLHS) Depart: 12:45 pm Return: 2:45 pm

- Don't forget bathing suit, towel, goggles, and a non-inflatable flotation device if needed.
- Parents responsible for providing the life jackets if their child needs one.
- A bus will transport children to the pool.



## Thursday:

- ◆ Inside Games: icebreakers, musical carpet squares
- ◆ Playground Time
- ◆ Kickball tourney
- ◆ Quiet Indoor Time: telephone
- ◆ **Craft Time:** make your own alien



## Friday: TRIP DAY! Must wear PlayZone T-shirt



### ◆ Laserdome (Mt. Joy) Depart: 9:40 am Return: 2:05 pm



- Each camper will participate in a laser tag session, and be given a 30 minute card for the arcade. Each child will also receive a fountain soda.
- ◆ Don't forget your packed lunch and water bottles.

### ◆ Movie Time at PlayZone



Please remember to bring a water bottle, lunch and snack daily.  
Schedule subject to change.







# SecondaryZone

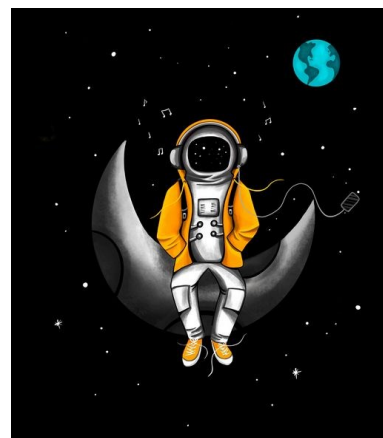
## Week 1: June 9-13

### Space Week



#### Monday: Welcome to SecondaryZone !

- ◆ Introductions, and camp info, icebreaker game (running game)
- ◆ Morning Games: 4 planets, travel through space
- ◆ Craft: diy nametag
- ◆ Afternoon Games: alien ball, pickleball



#### Tuesday:

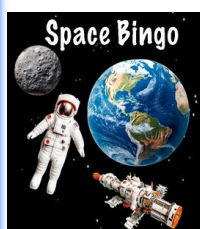


- ◆ Morning Games: aliens & astronauts, dodgeball variations
- ◆ Afternoon Games: among us and outdoor play

#### Wednesday: Swim Day



- ◆ Craft: UFO
- ◆ Summer Reading Program - Mrs. Young from the NC Public Library begins her weekly visits with us for a story/activity (10:30-11:00 am). Each week she will bring a tote of books for campers to look over the next week.
- ◆ Games: galaxy tag, camper's choice
- ◆ **Swimming @ West Shore Natatorium (RLHS)** Depart: 1:15 pm Return: 3:15 pm
  - ◆ Don't forget swimsuit, towel, goggles, and non-inflatable flotation device if needed.
  - ◆ Parents are responsible for providing the life jackets if their child needs one.
  - ◆ A bus will transport children to the pool.



#### Thursday:

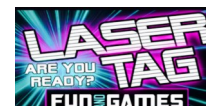
- ◆ Morning Games: camper's choice
- ◆ Space BINGO
- ◆ Afternoon Games: Spaceball



#### Friday: TRIP DAY! Must wear PlayZone T-shirt



- ◆ **Laserdome** (Mt. Joy) Depart: 9:40 am Return: 2:05 pm
  - ◆ Each camper will participate in a laser tag session, and be given a 30 minute card for the arcade. Each child will also receive a fountain soda.
  - ◆ Don't forget your lunch and water bottles.
- ◆ Movie Time at PlayZone



Please remember to bring a water bottle, lunch and snack daily.  
Schedule subject to change.



# West Shore School District

## SUMMER

### Breakfast/Lunch Menu

#### June 2025



MONDAY		TUESDAY	WEDNESDAY	THURSDAY	FRIDAY
		6/4	6/5	6/6	6/7
Breakfast: 8:15AM - 9AM Lunch: 11:30 AM - 12:30 PM					
6/10	6/11	6/12	6/13	6/14	
6/16 Muffin & Cheese Stick  Turkey & Cheese Sandwich  Carrot Snack Pack	6/17 Bagel & Cream Cheese  Mini Corn Dogs  Baked Beans	6/18 Bacon, Egg & Cheese English Muffin  Peanut Butter and Jelly Sandwich  Broccoli Dippers	6/19 Cereal Bowl & Graham Crackers  Ham & Cheese Sandwich  Bell Pepper Slices	6/20	
6/23  Fruit Frudel  Italian Sub  Celery Sticks	6/24  Mini Bagels  Chicken Nuggets & Dinner Roll  Steamed Carrots	6/25  Sausage Breakfast Pizza  Turkey & Cheese Sandwich  Cucumber Slices	6/26  Banana Bread  Yogurt, Cheese Stick & Bagel  Carrot Snack Pack	6/27	
6/30 Bagel & Cream Cheese  Turkey & Cheese Sandwich  Celery Sticks					Assorted fruits & milk served daily

(V) = Vegetarian  
(P) = May contain Pork

**MENUS SUBJECT TO CHANGE**